



**Lincoln
University**
Te Whare Wānaka o Aoraki
AOTEAROA • NEW ZEALAND



Agronomy of crops and pastures

Incitec Pivot at Lincoln University

Derrick Moot





HireQuip

63% Mountain and hill country



13% Inland basins







High variability over short spaces



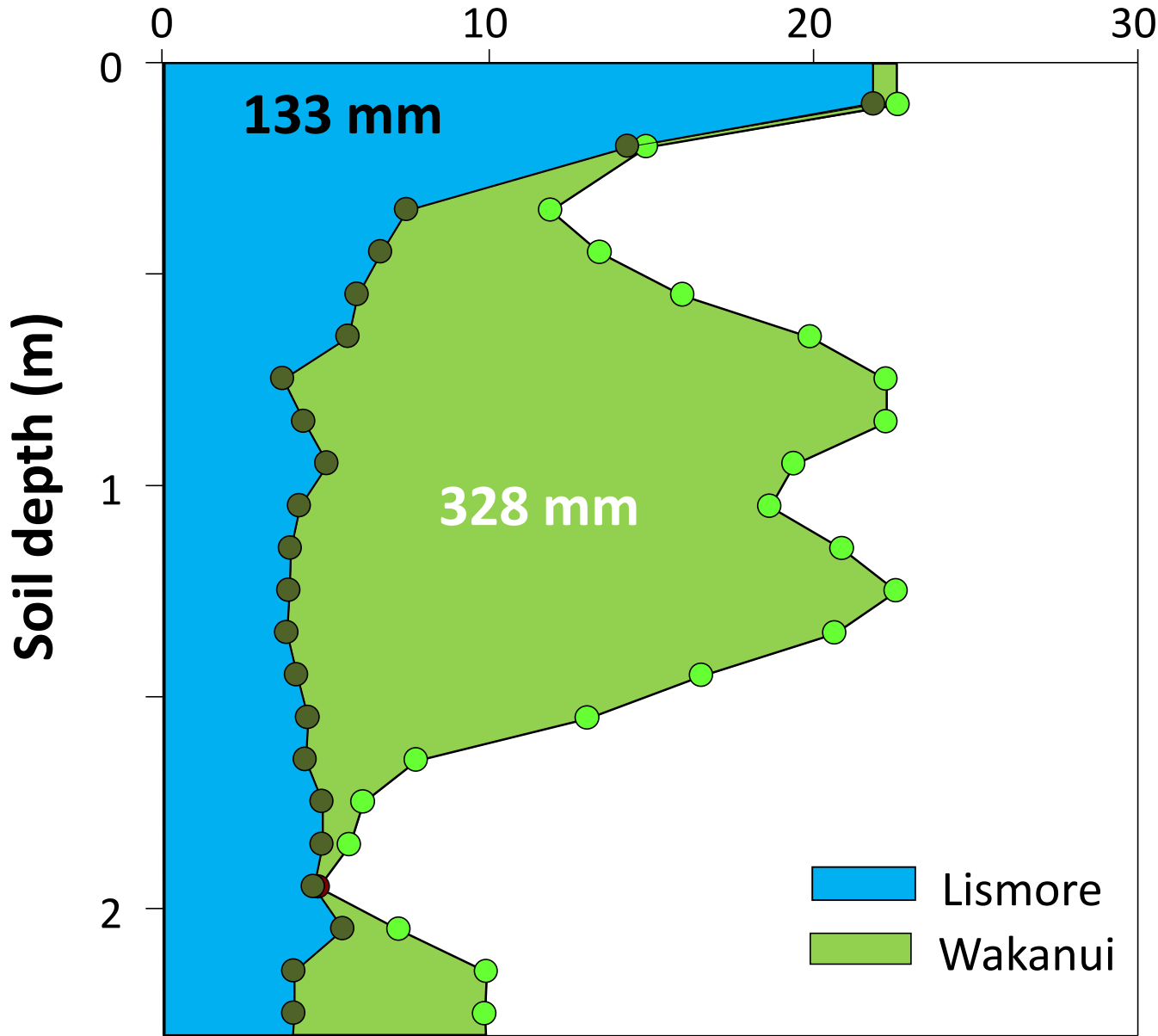
The sediment load of Canterbury rivers is 10x the global average



Soil water extraction - Wakanui



Water extraction (mm)



Soil water extraction

Deep Wakanui soil has 200 mm more available water

Climate

Median rainfall (mm) (1971-2000)

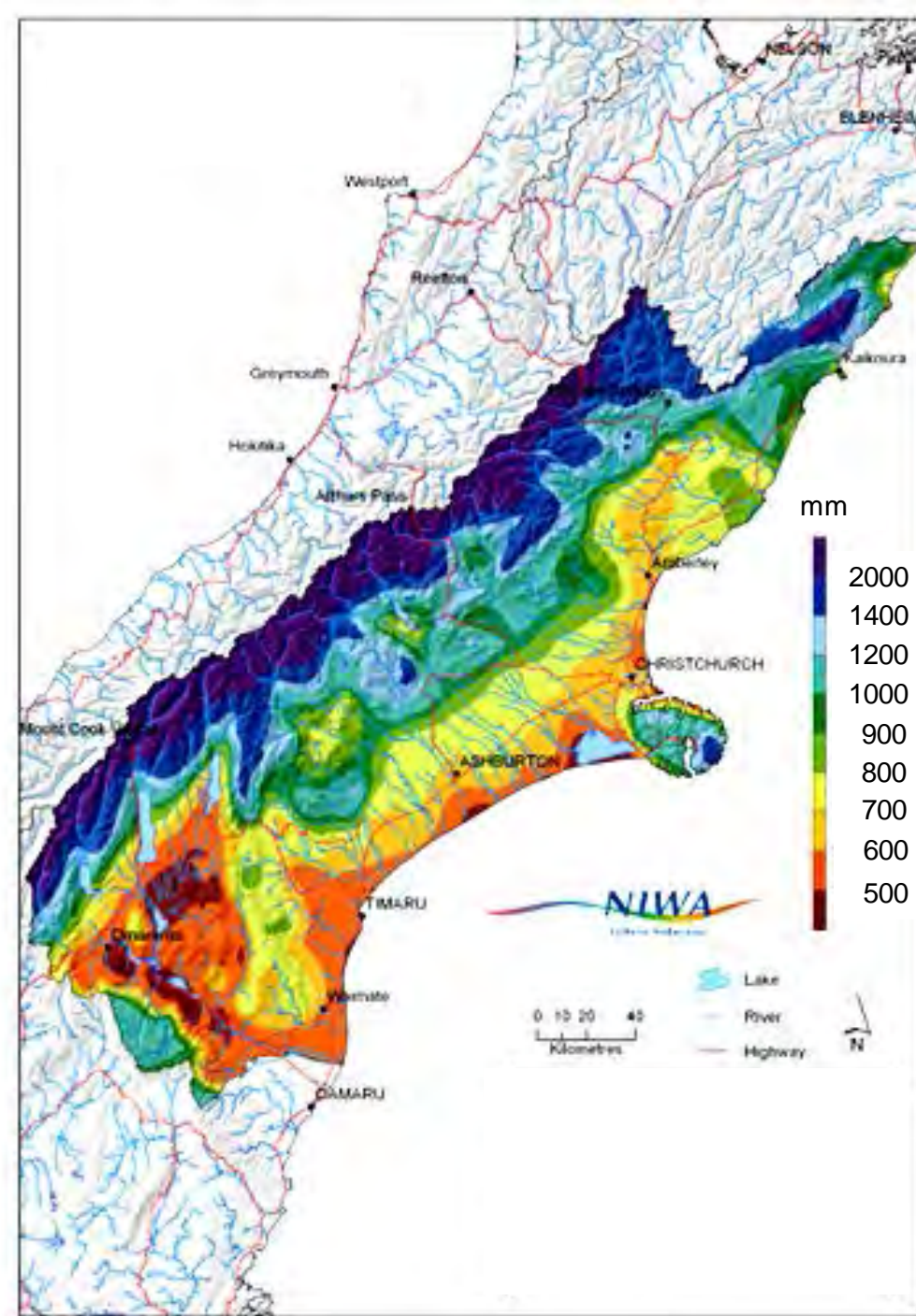




Photo: Warwick Scott
Lincoln University

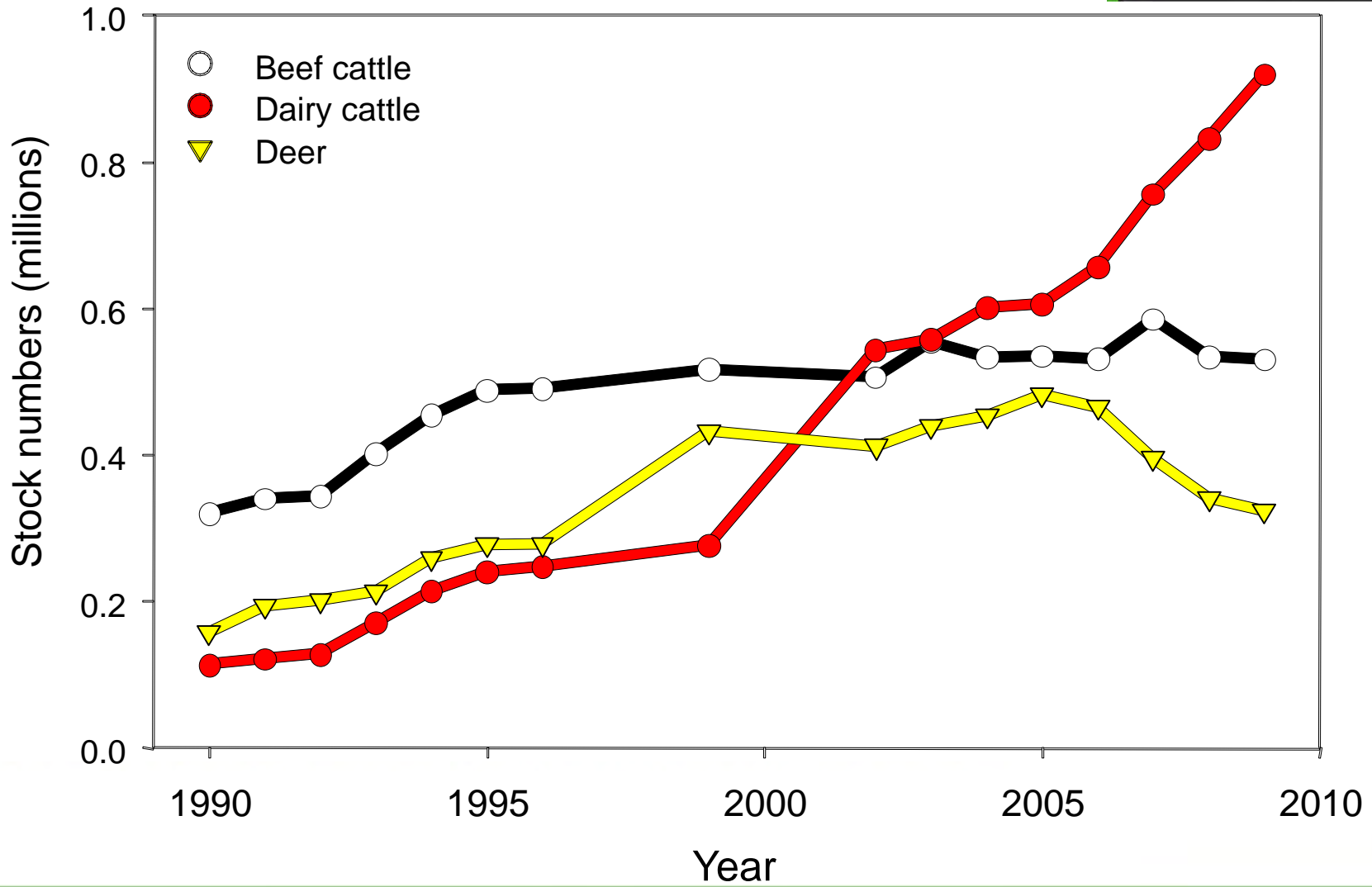
Unimproved scrub land on light soils

Dairy pasture



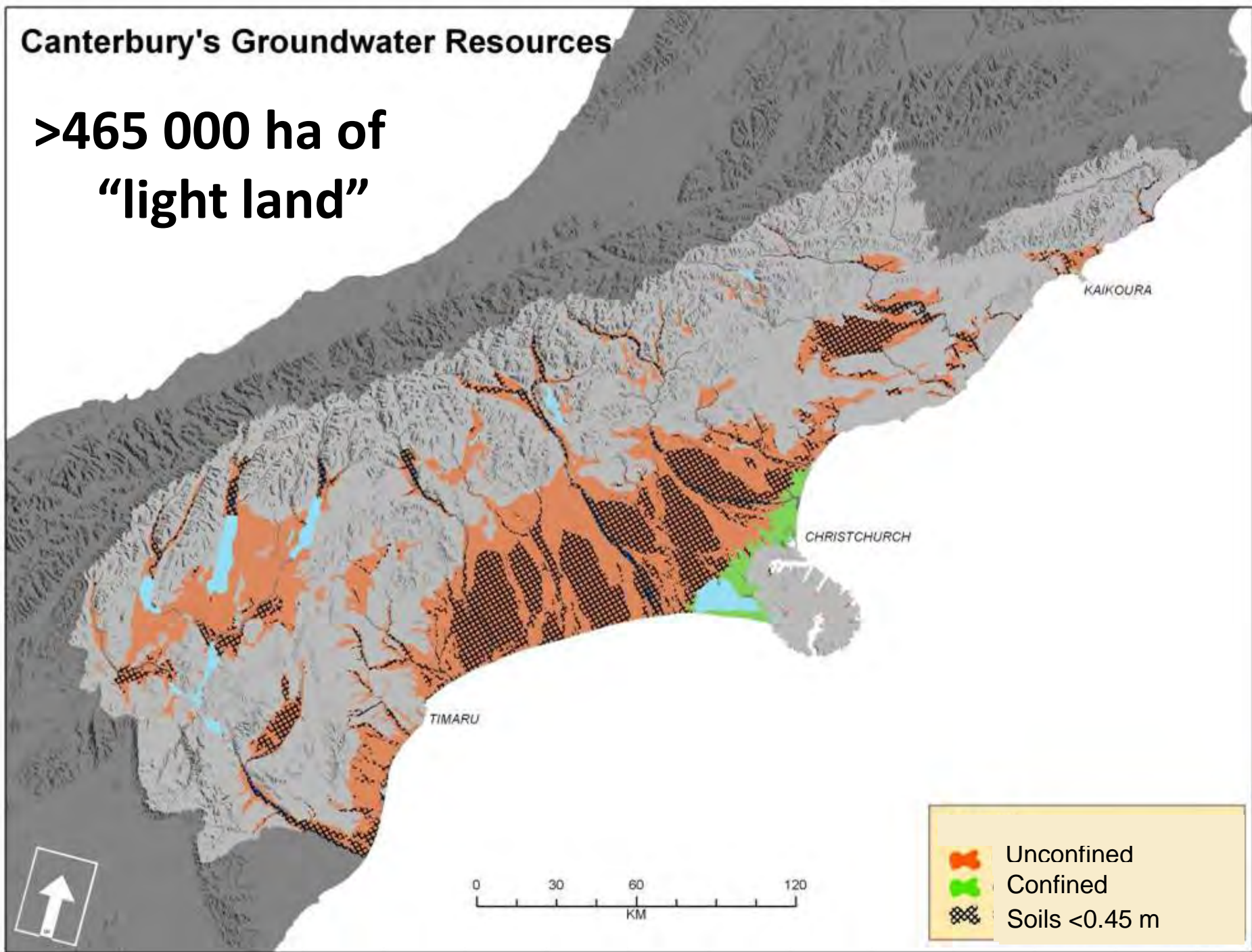
**Water + nitrogen =
ryegrass**

The population...deer & cattle



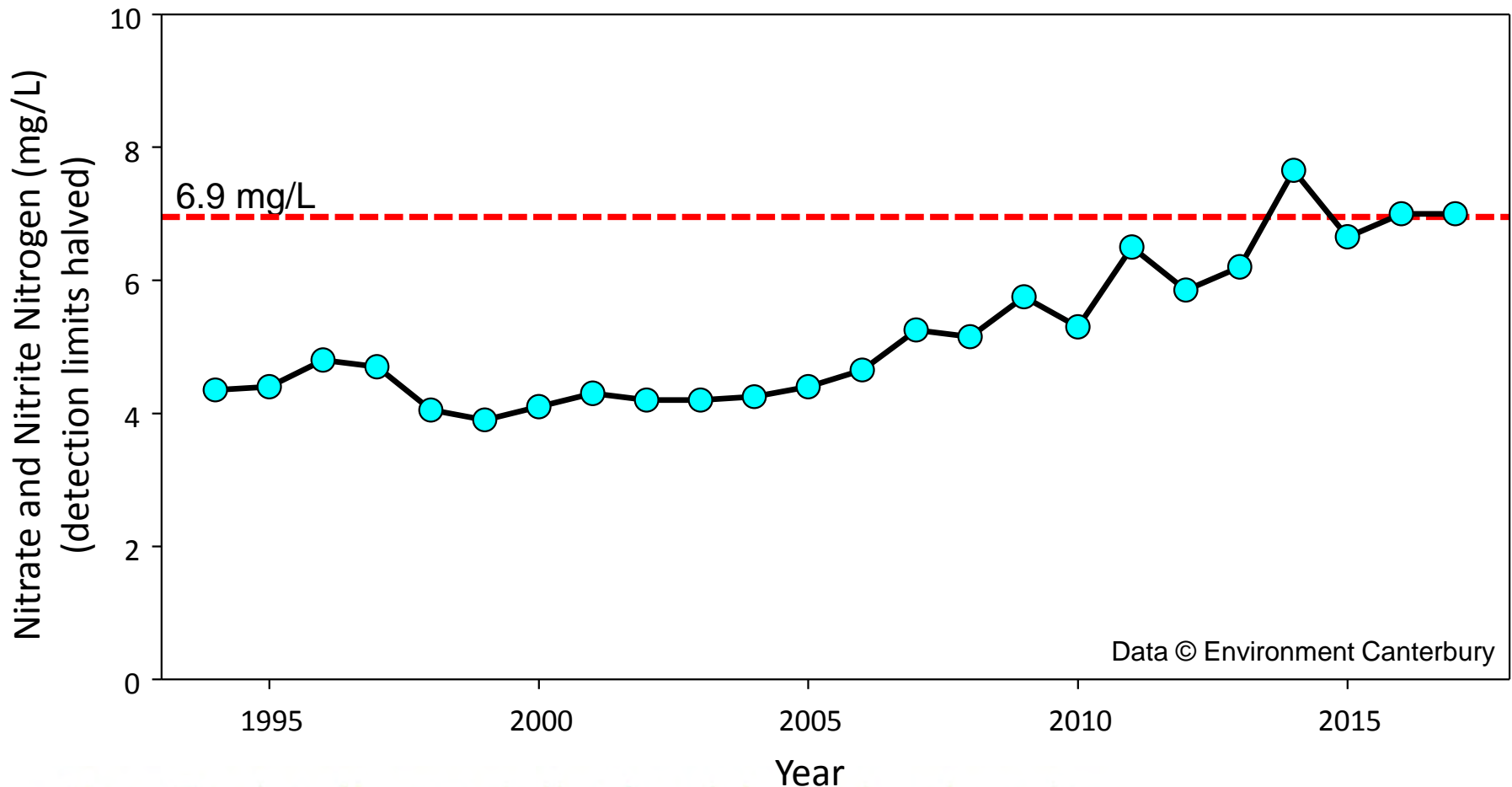
Canterbury's Groundwater Resources

**>465 000 ha of
"light land"**



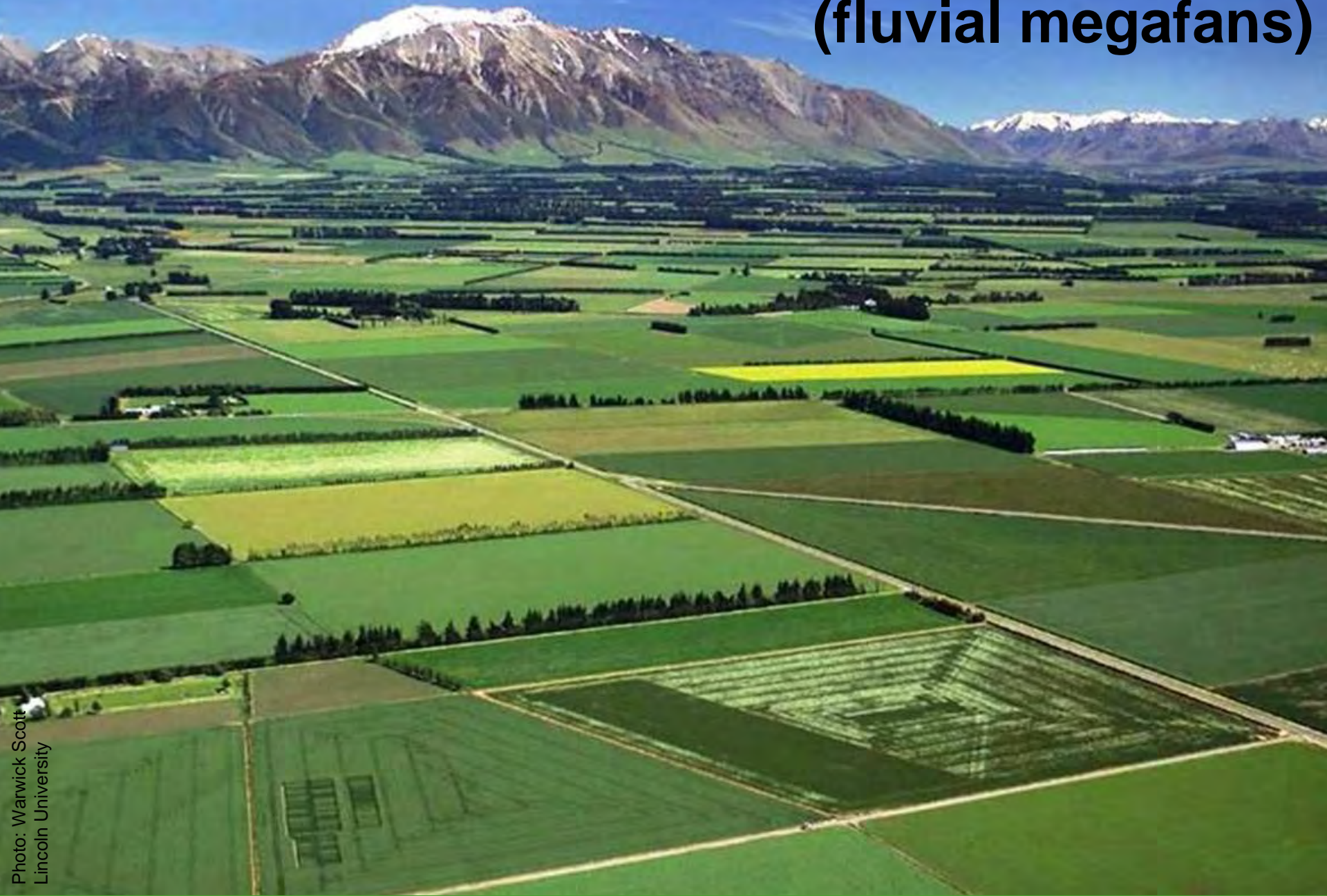


Annual Median Nitrate +Nitrite Harts Creek



New Zealand's specialist land-based university

21% Flat undulating floodplain (fluvial megafans)



~60% of the fresh and process peas





Photo: Warwick Scott
Lincoln University

Onions for export, 4000 ha of potatoes

High values seed crops



10,000 ha clover seed for export





Photo: Warwick Scott
Lincoln University

Herbage grass 1.5 - 2.5 t seed/ha



Photo: Warwick Scott
Lincoln University

Wine production in Nth Canterbury

Policy & management questions

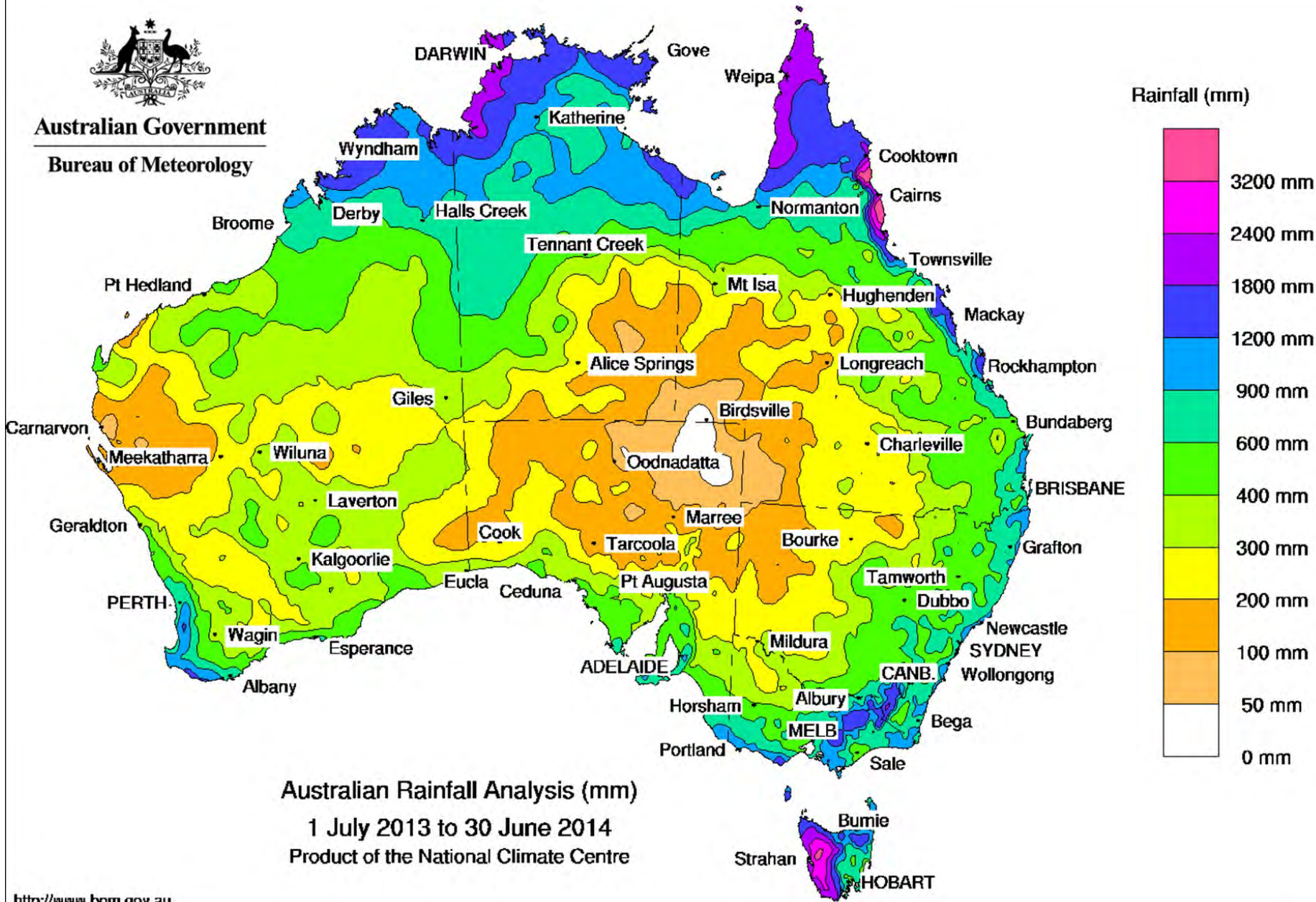


- What types of land uses, and
- How intensive can they be without exceeding a groundwater system's limits? – nitrogen mgmt
- How might land be managed to maximize profitability and remain within the N limits?
 - i.e. How many dairy farms, potato farms, onion paddocks, market gardens, sheep paddocks... should be allowed on a "catchment"?

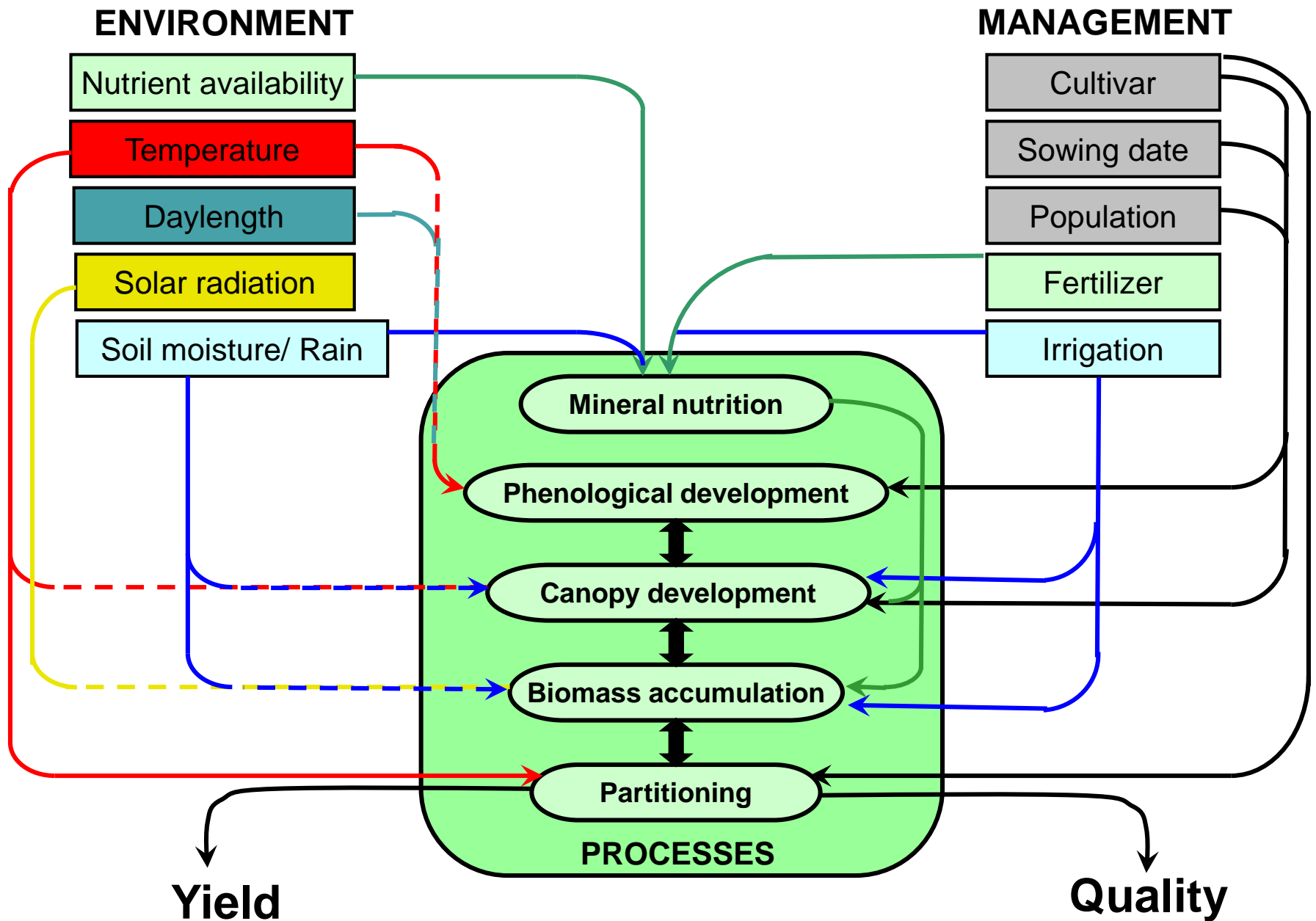
New Zealand's specialist land-based university



Australian Government
Bureau of Meteorology



<http://www.bom.gov.au>



Relationship between environment and management factors and the physiological processes that regulate crop yield and quality. (Source: Hay & Porter 2006).

Growth vs Development

Growth: an irreversible increase in DM

- function of light interception and
- photosynthesis and then
- assimilate partitioning

Development: irreversible change in the state of an organism

- fixed pattern and reversion is rare
e.g. silking,
pod initiation,
dough development

Measurements

Light environment



Chemical Analysis:

- N (shoots and roots)
- Starch in roots
- Soluble sugars in roots

Temperature

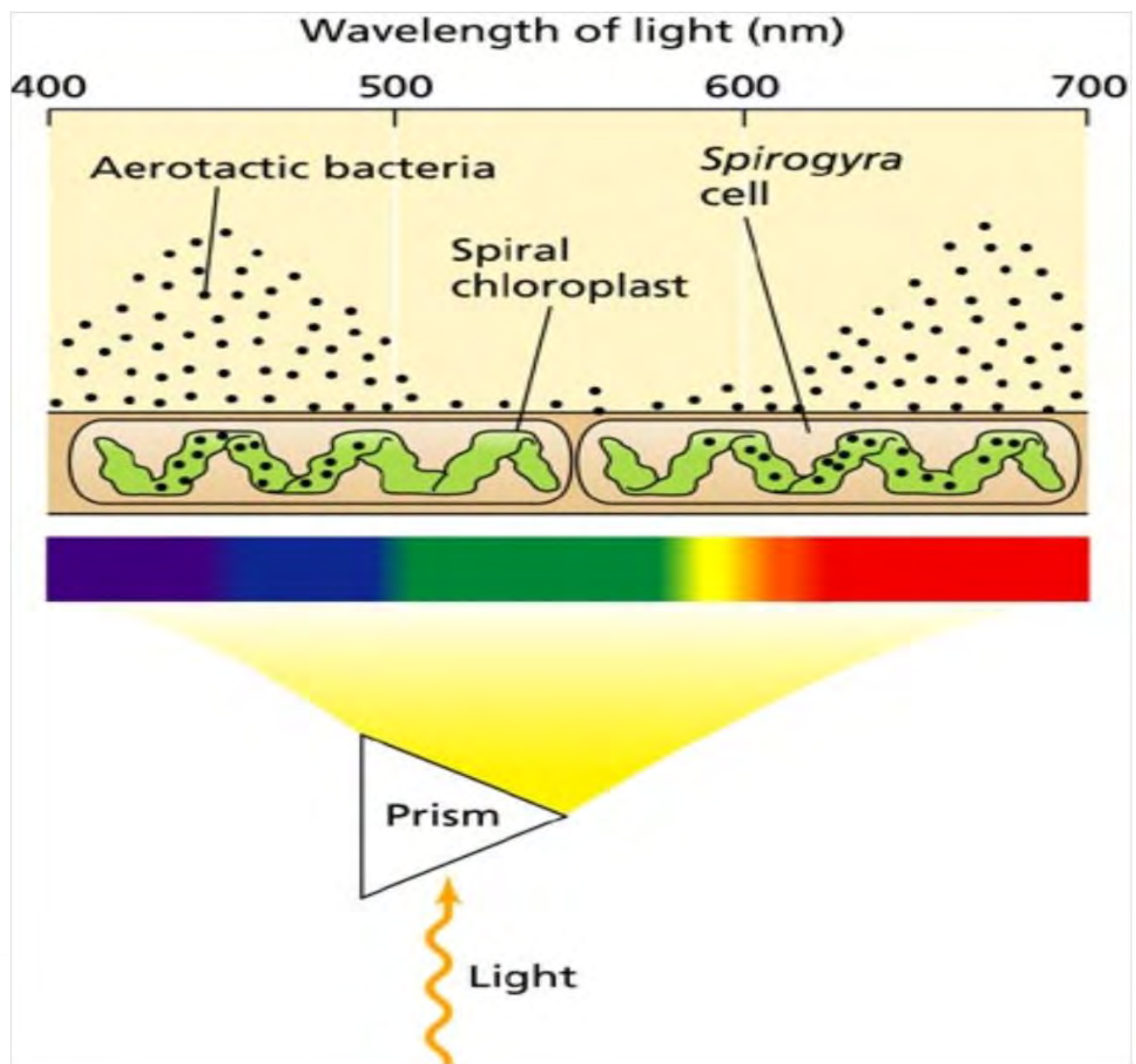
- Air and soil

Soil moisture



Photosynthesis





The canopy: the energy capture device



New Zealand's specialist land-based university

Crop Growth and Yield

1) $C = E * Q$

C = daily rate of DM prod.

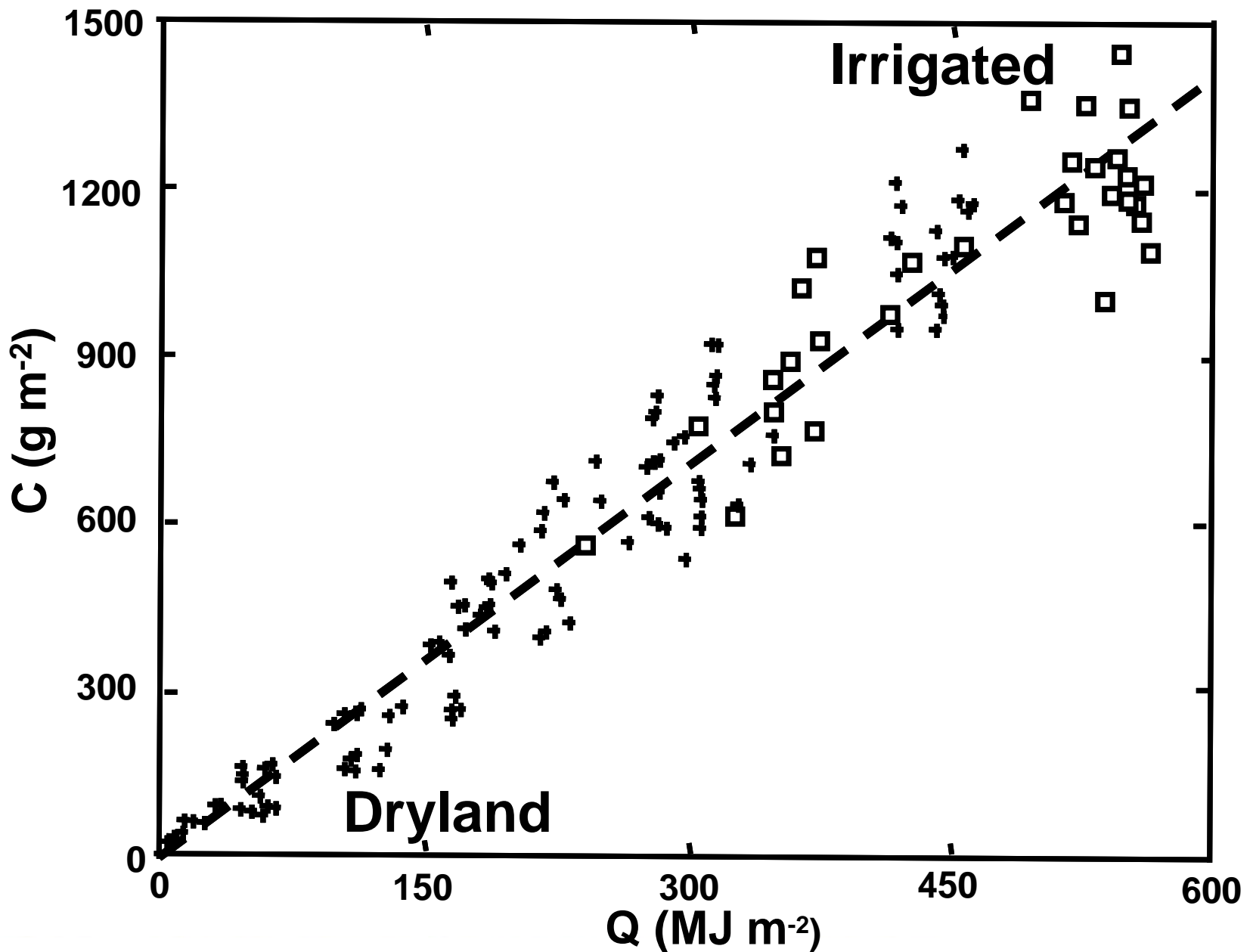
E = radiation use efficiency

Q = PAR intercepted

2) $Y = HI * C * dt$

Y = seed yield/unit area

HI = harvest index

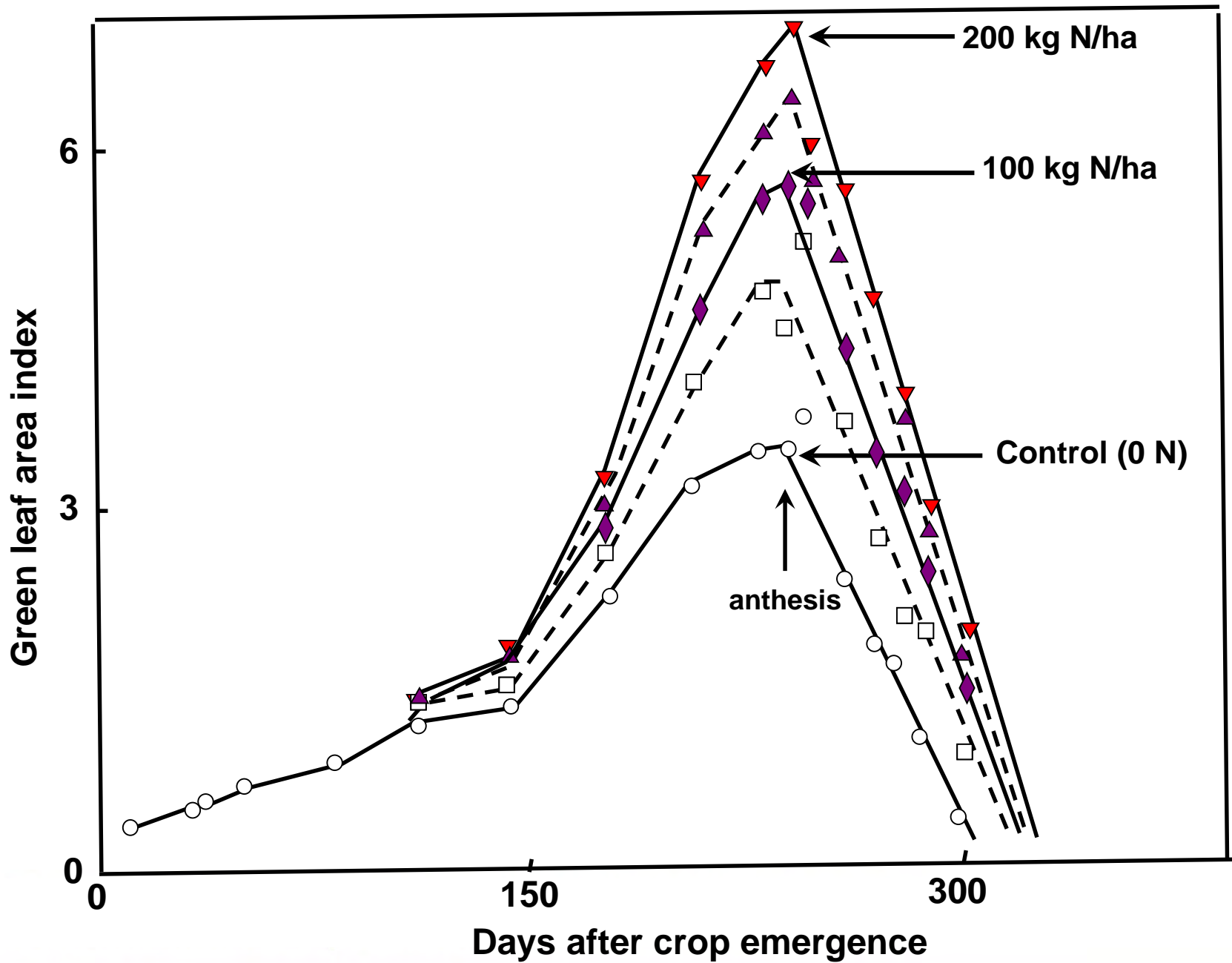


Total DM production (C) from successive harvests and intercepted PAR (Q) for field peas in 5 experiments in 4 seasons with different cultivars, sowing times and irrigation treatments.

The form of the regression is: 2.36 ± 0.03 g DM/MJ PAR ($R^2=0.97$). Wilson 1987

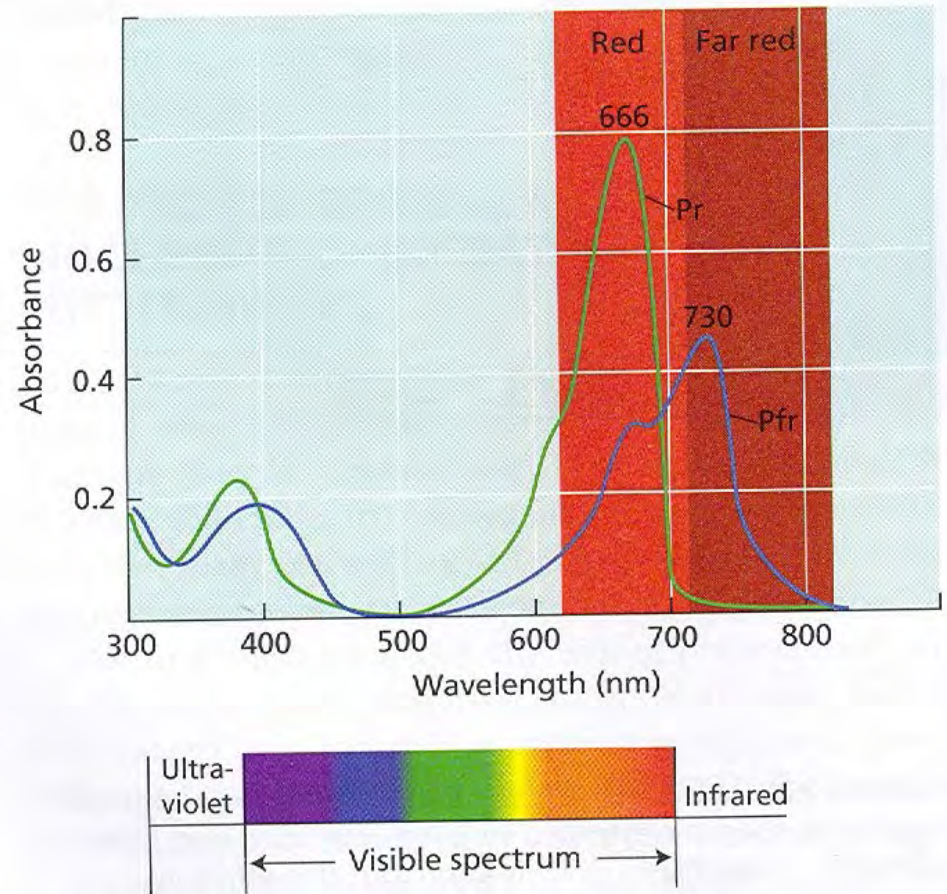
Light

- photosynthesis to produce CHO's for growth.
- Photosynthetically active radiation (PAR) is in the visible range (400-700nm).
- Conversion of PAR to DM
 - ~2.5 g DM /MJ/m² for C3 plants
 - ~3.8 g DM /MJ/m² for C4 plants



Light

- **Complex & dynamic sign**
- **Quantity of light**
 - photons falling /area/time
- **Quality of light**
 - plant responses



New Zealand's specialist land-based university

Plant development

A) Vegetative

- Emergence and - temperature
- Leaf appearance rates (phyllochron)- temperature

B) Reproductive

- Time of flowering (anthesis), Temperature and photoperiod
- Duration of grain fill -temperature

Driven by temperature modified by photoperiod and vernalization

Temperature

- T_t = Thermal time ($^{\circ}\text{Cd}$)
$$= \frac{T_{\text{max}} + T_{\text{min}}}{2} - T_b$$
- Growing degree days (GDD)
- Heat units (HU)

Sowing to emergence



Thermal time
- **soil**
 temperature
~ **125-150 °Cd**



Lincoln
University

Te Whare Wānaka o Aoraki

AOTEAROA • NEW ZEALAND

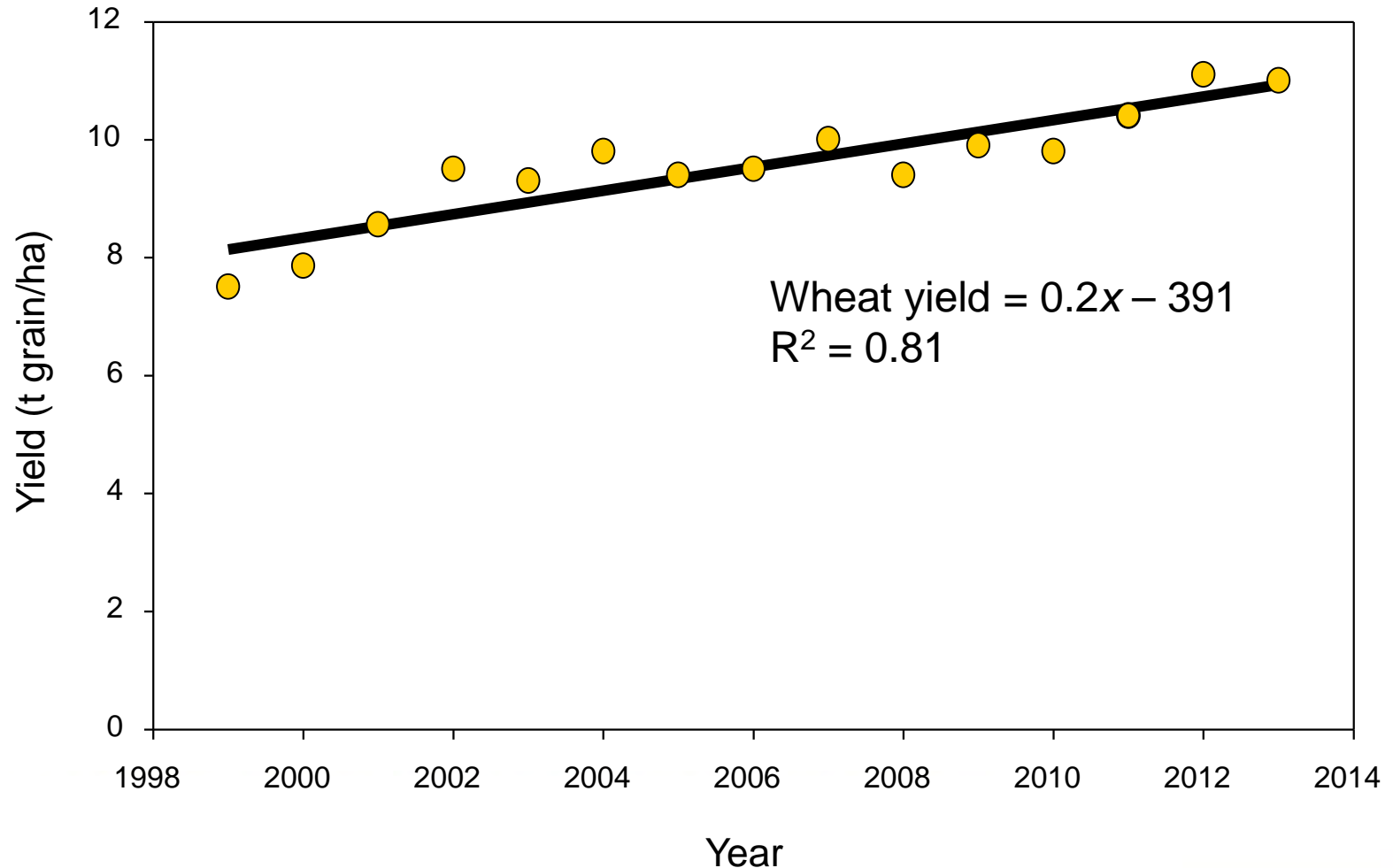
**Grain-filling: constant in thermal time –
air temperature**

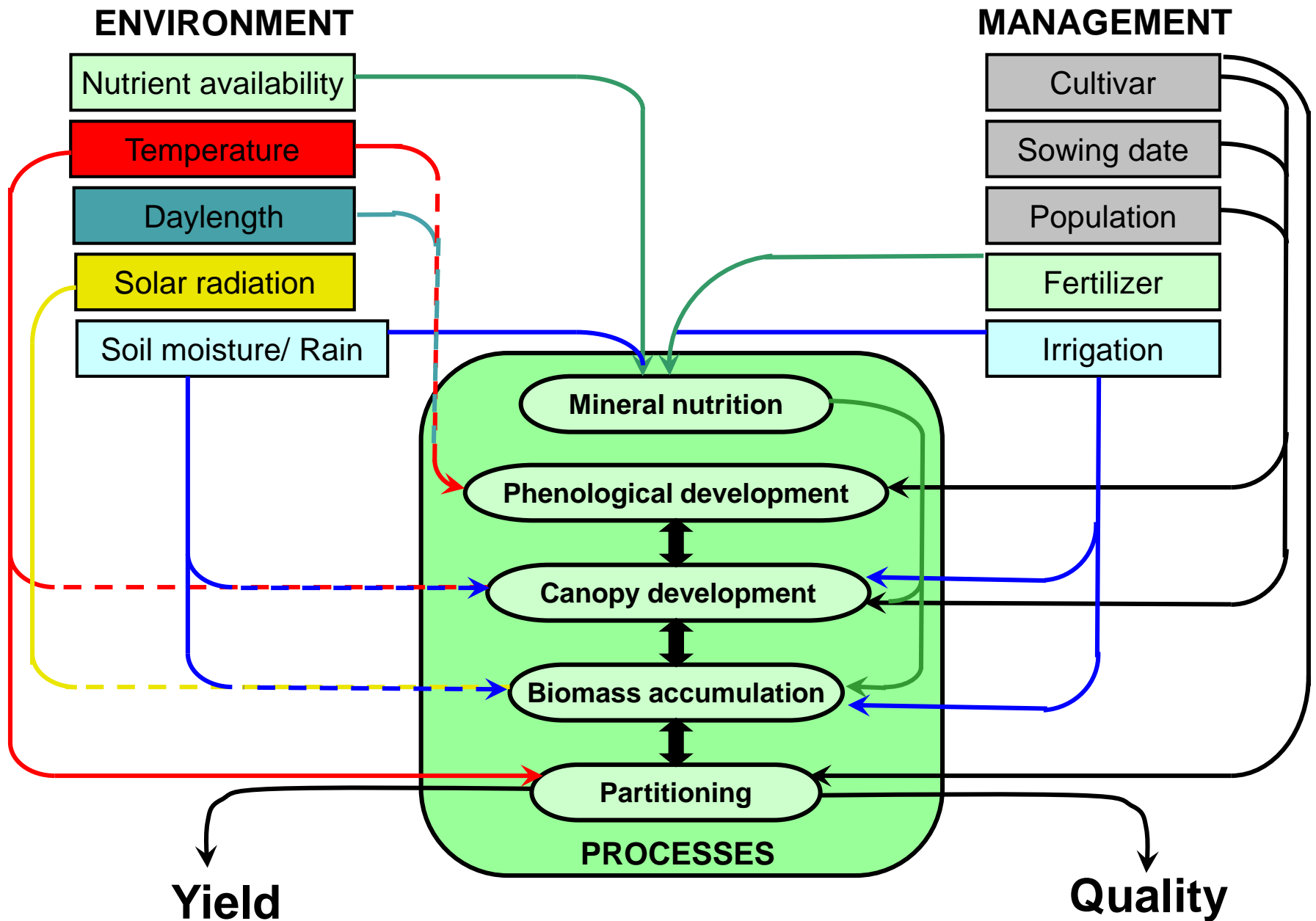


Wheat 15 t/ha; 40,000 ha
Barley 13 t/ha; 40,000 ha



Wheat grain yields in Canterbury





Relationship between environment and management factors and the physiological processes that regulate crop yield and quality. (Source: Hay & Porter 2006).

Olsen P<6



Olsen P>20



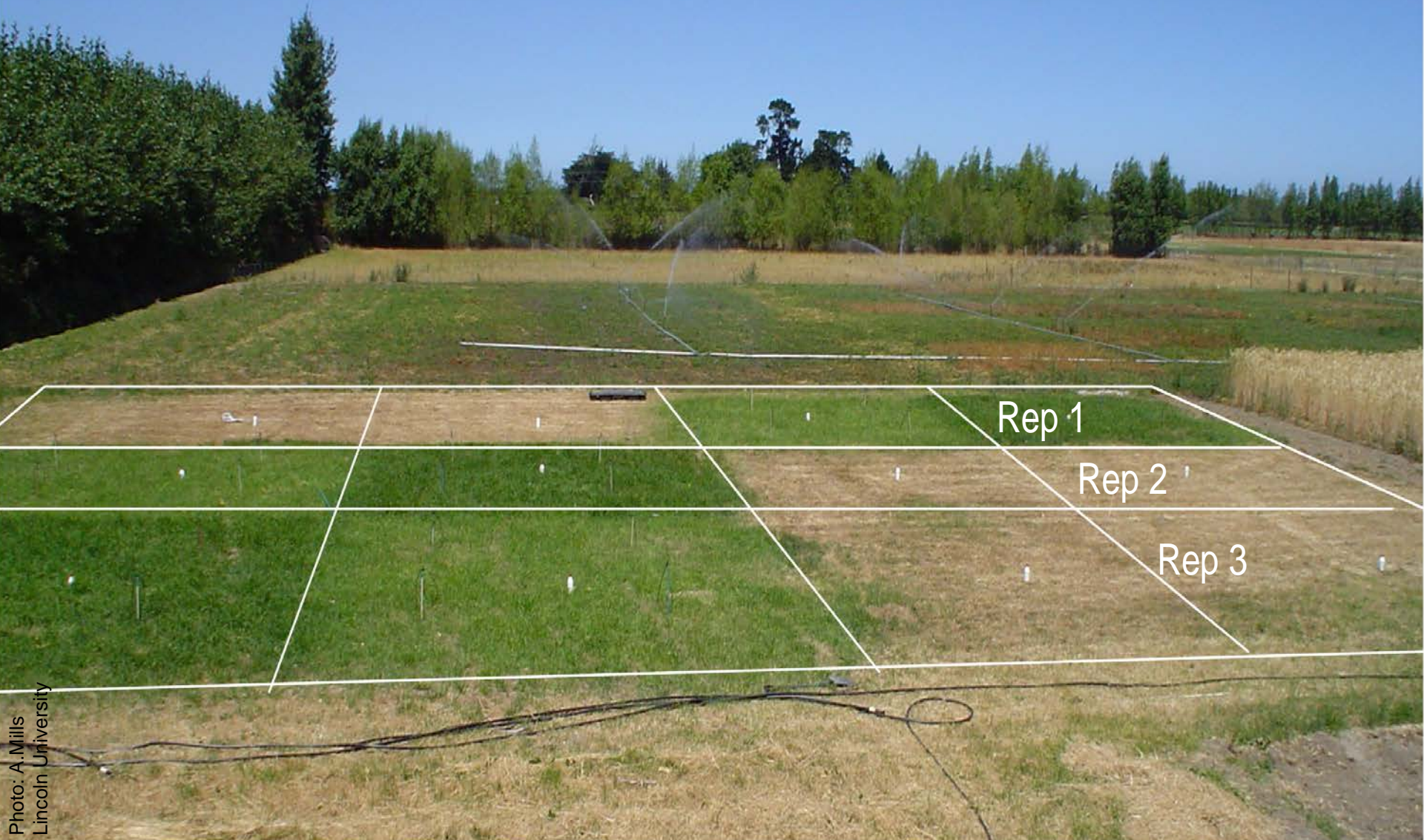
Drilling seed with fertiliser

Direct drilling = seed + fertiliser

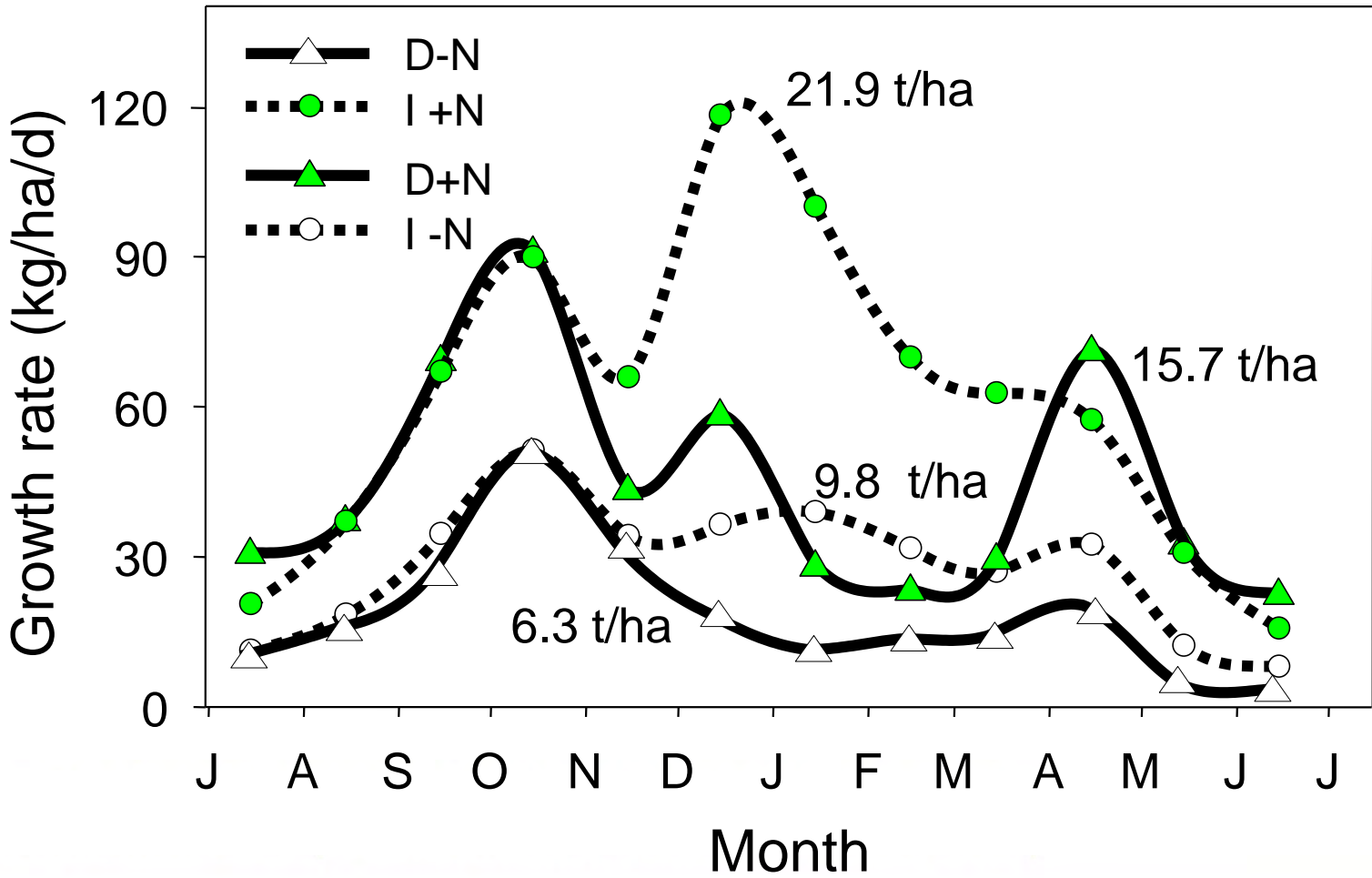


New Zealand's specialist land-based university

Experiment site



Growth rates (2 year means)



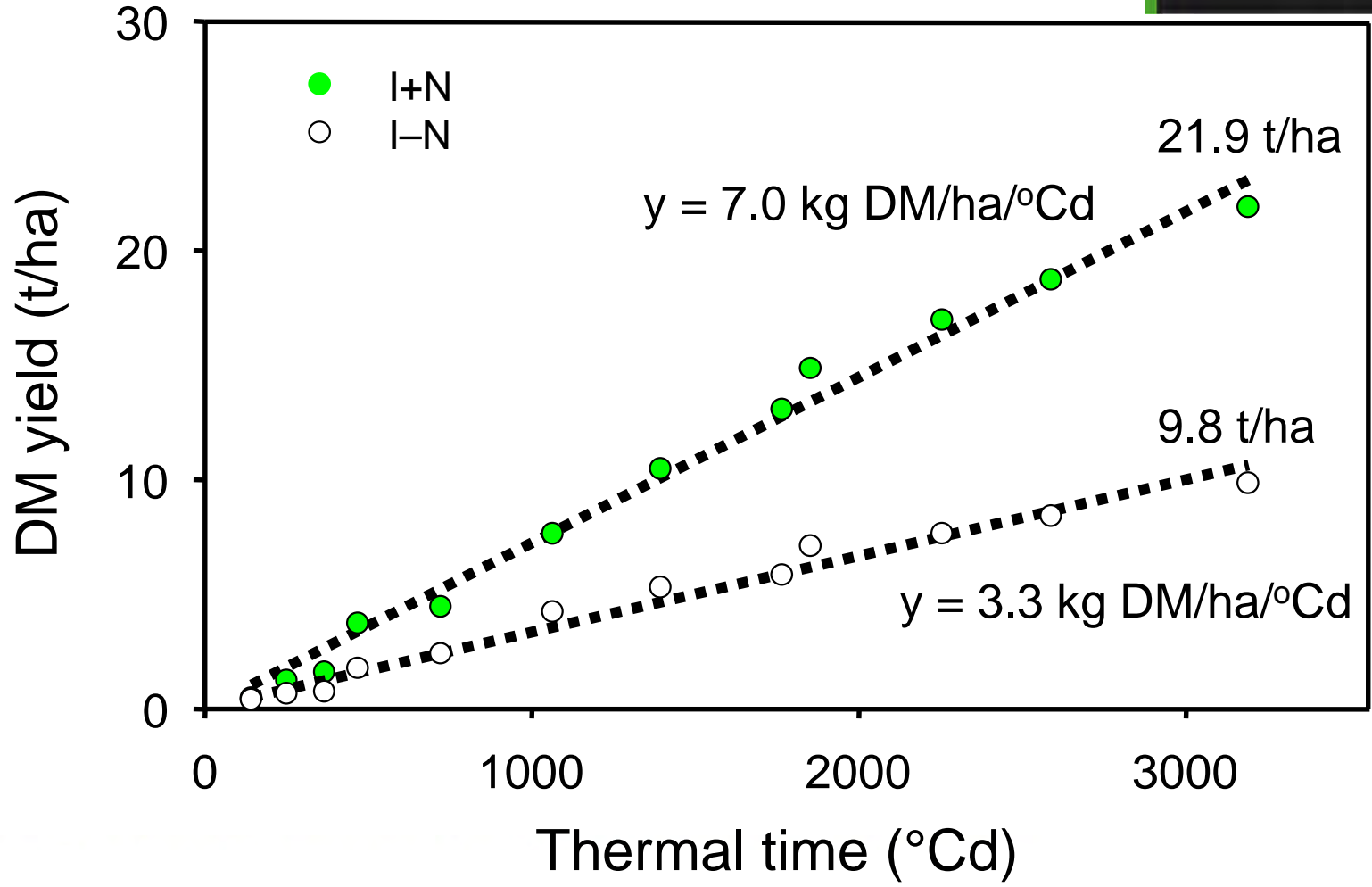
Winter

⇒ temperature response

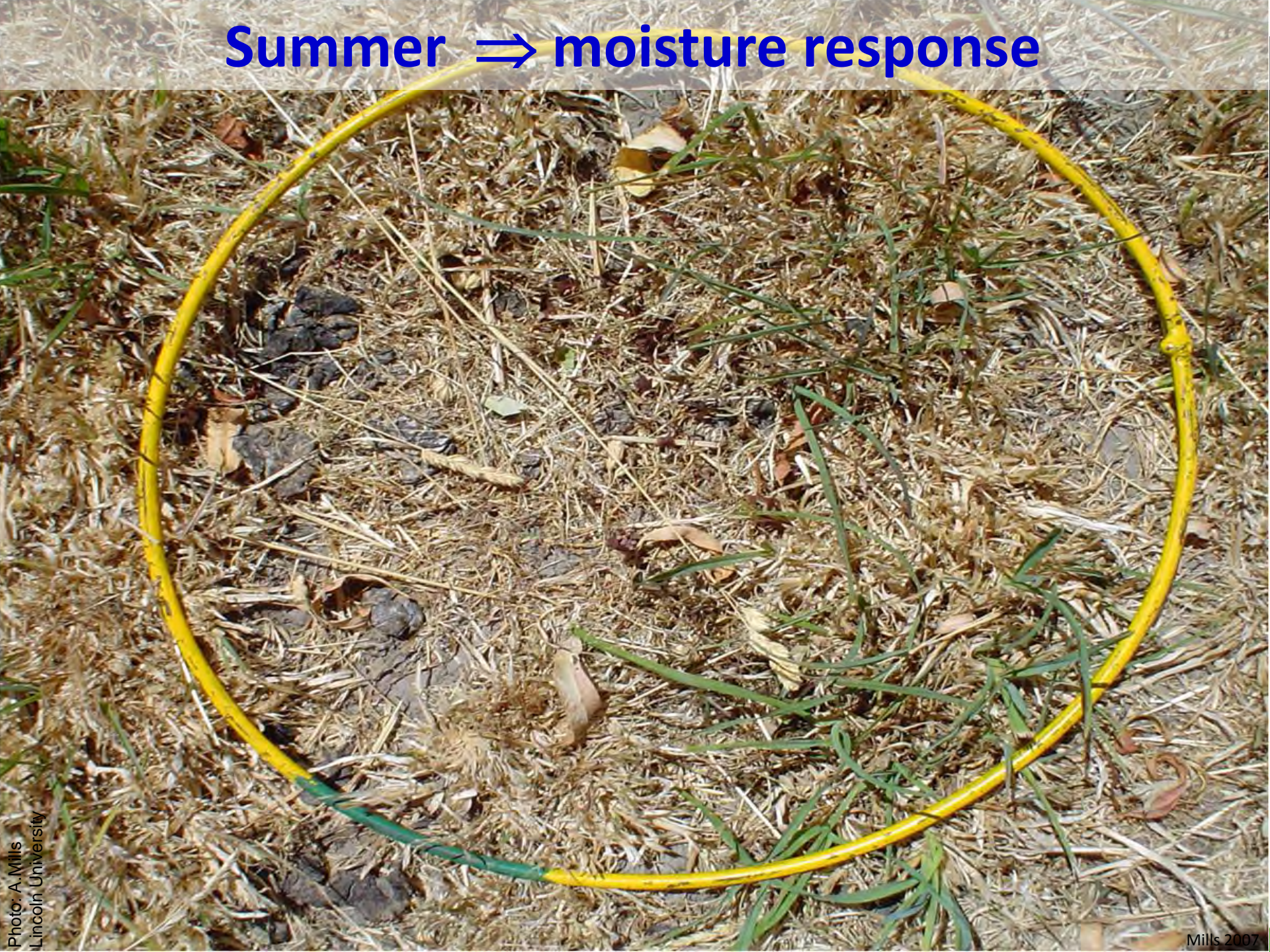


DM yield response to thermal time

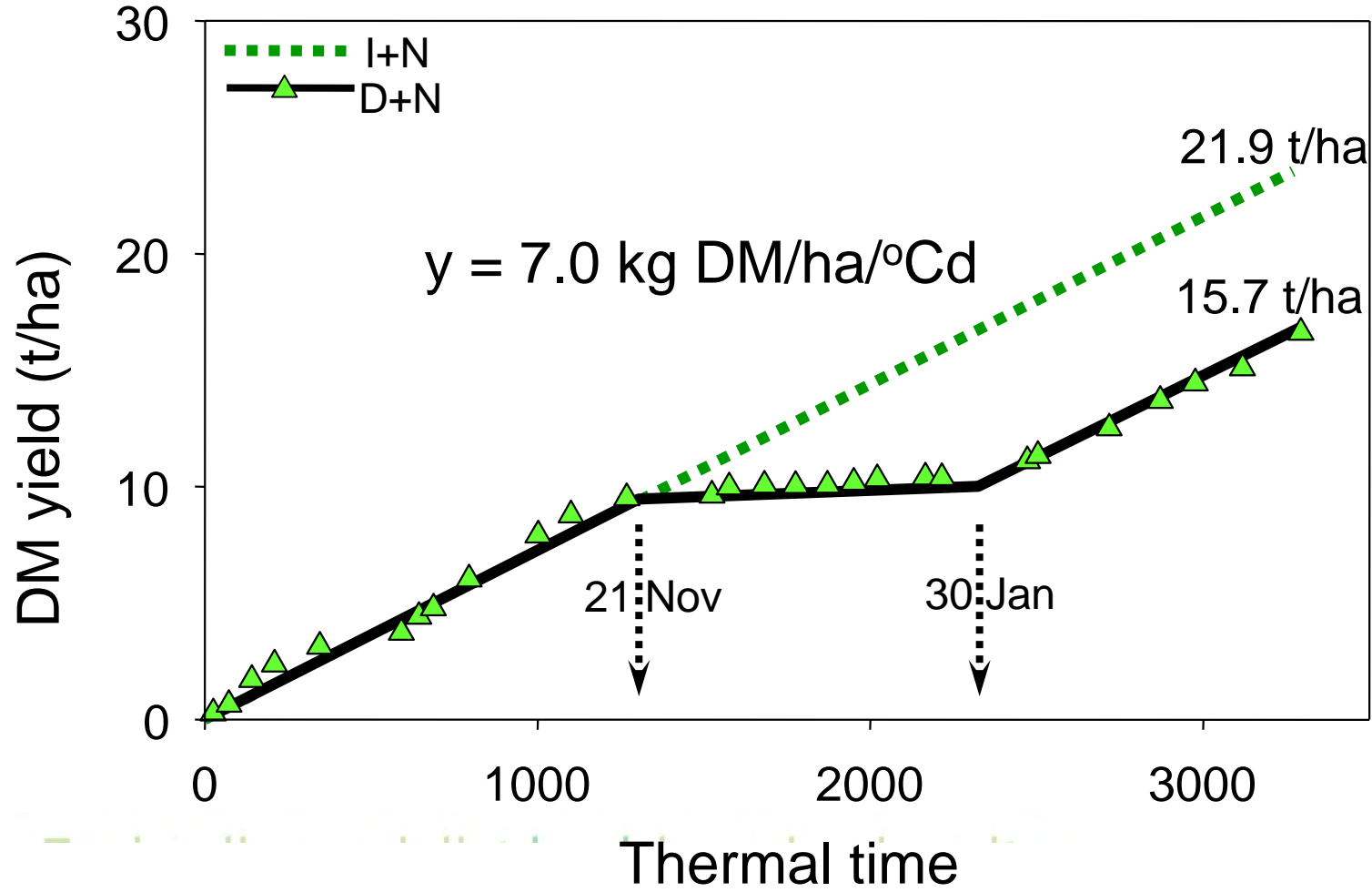
($T_b = 3^\circ\text{C}$)



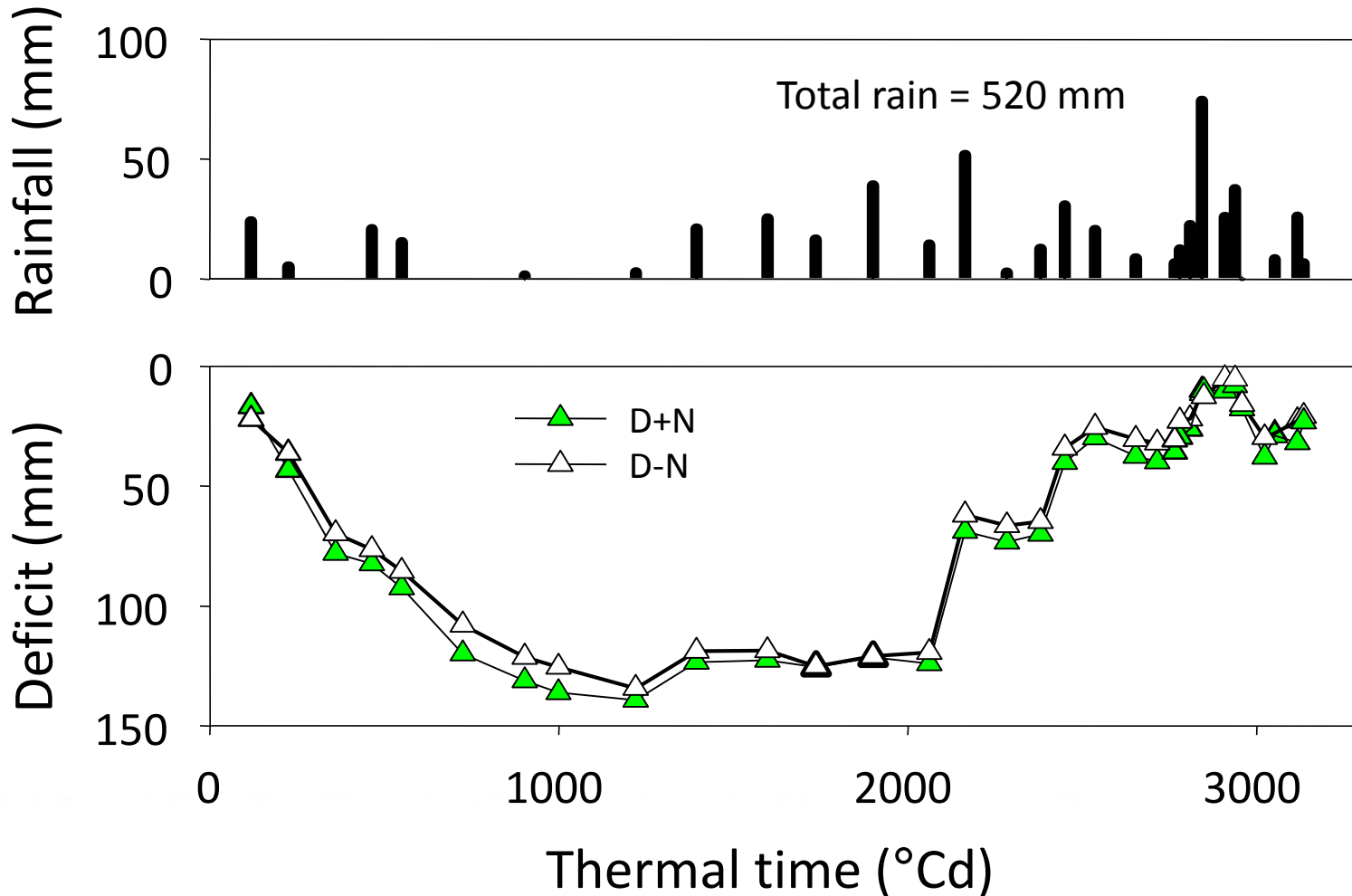
Summer \Rightarrow moisture response



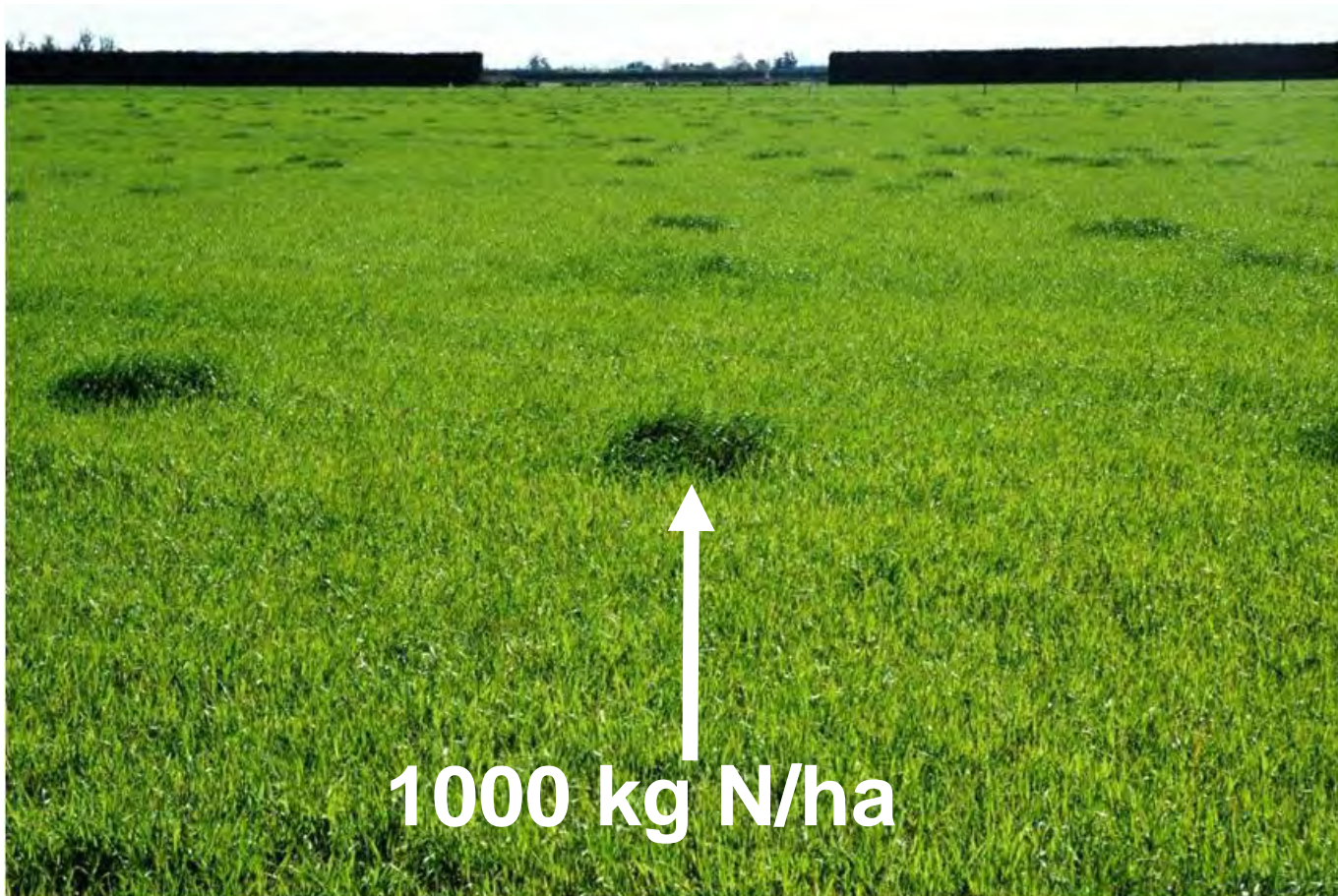
Water stress effect on yield



Soil moisture deficit 2003/04

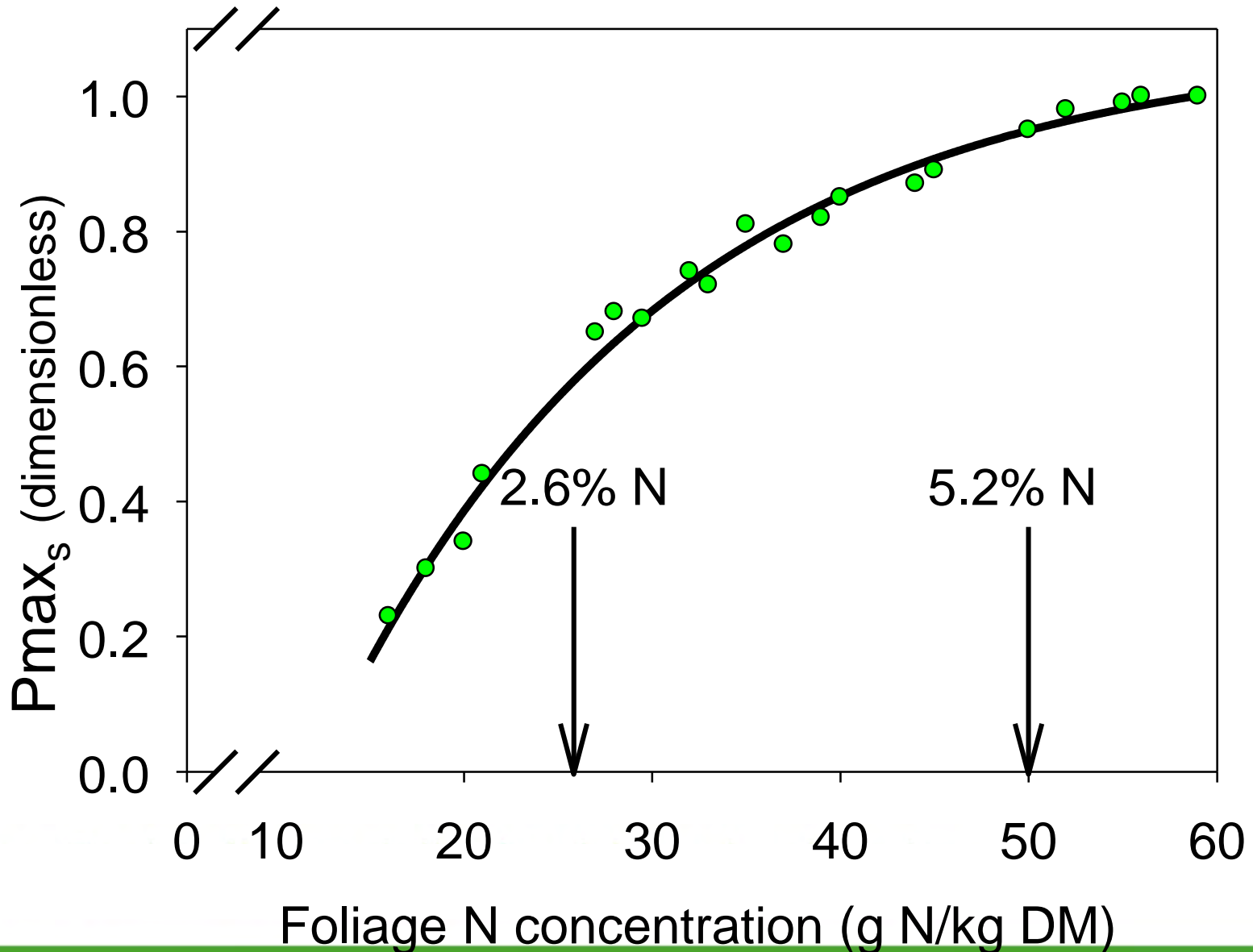


Nitrogen deficient pasture – inefficient user of water

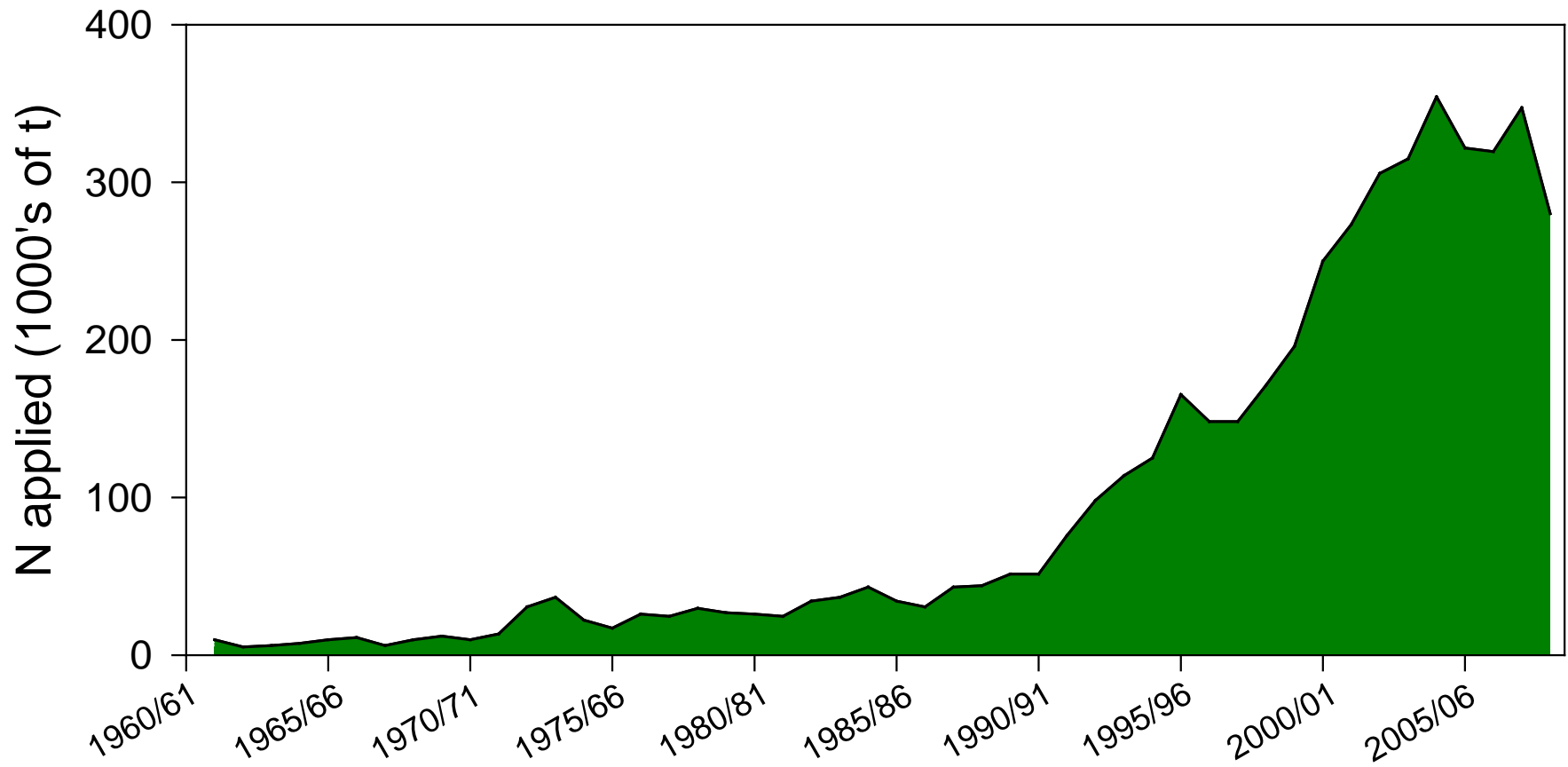


New Zealand's specialist land-based university

Plant vs animal requirements



Nitrogen fertiliser use

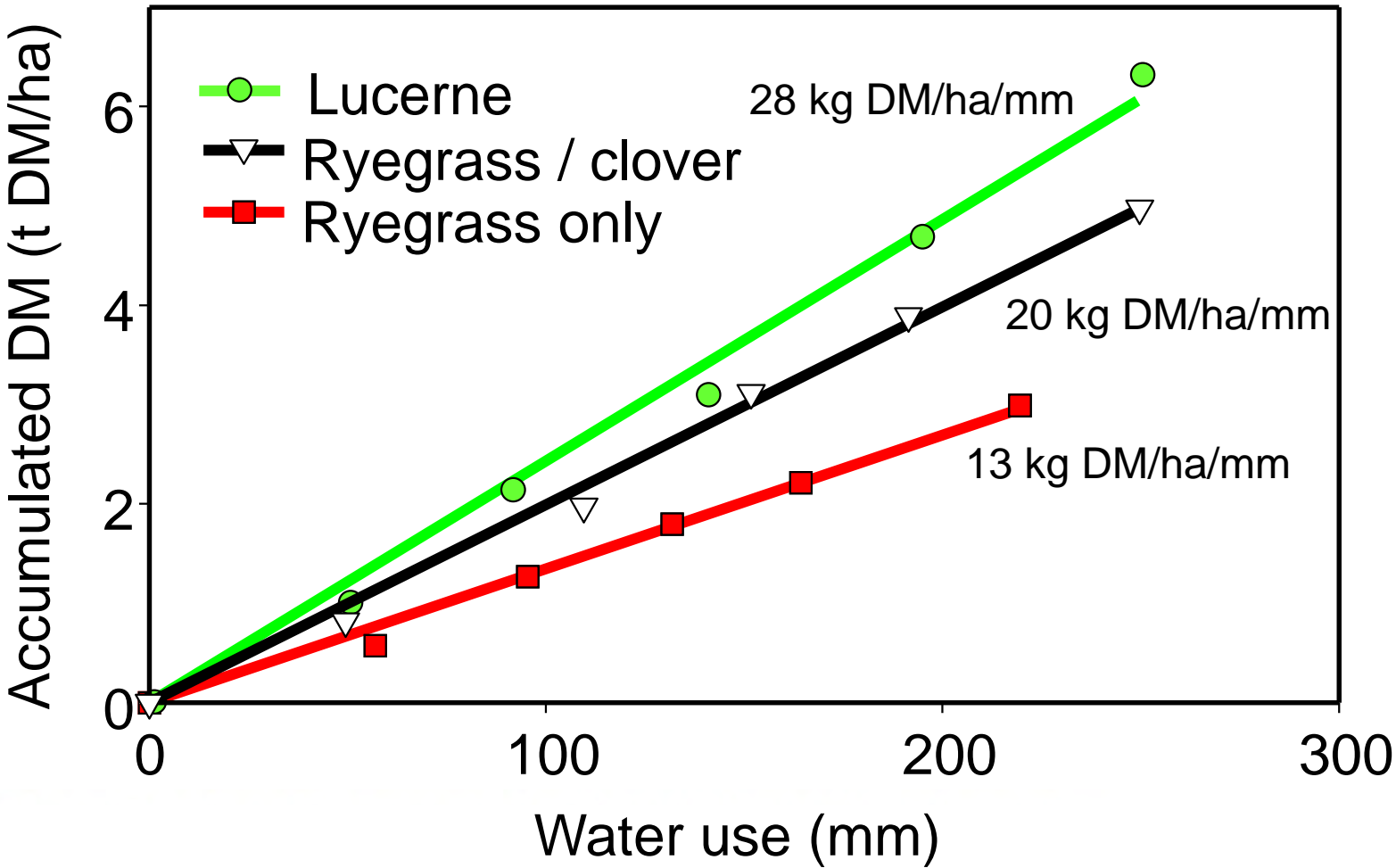


New Zealand's specialist land-based university

How can we increase WUE on-farm?



Spring WUE: legume = (nitrogen)



'Rosabrook' subterranean clover



Biological N fixation

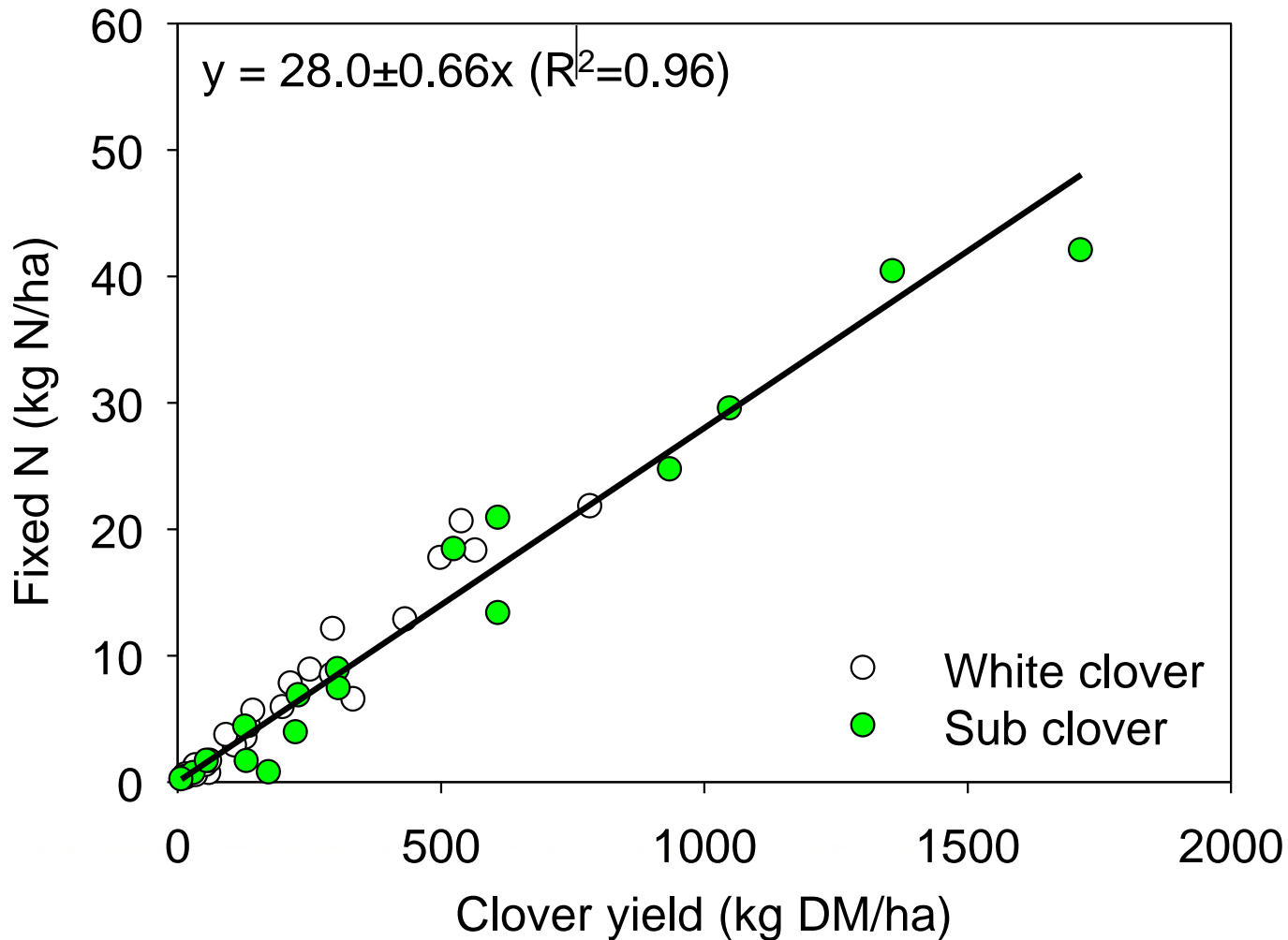






Photo: Jo Grigg
Tempello

Sheep prefer 70% legume, 30% grass

Clover content & milksolids production

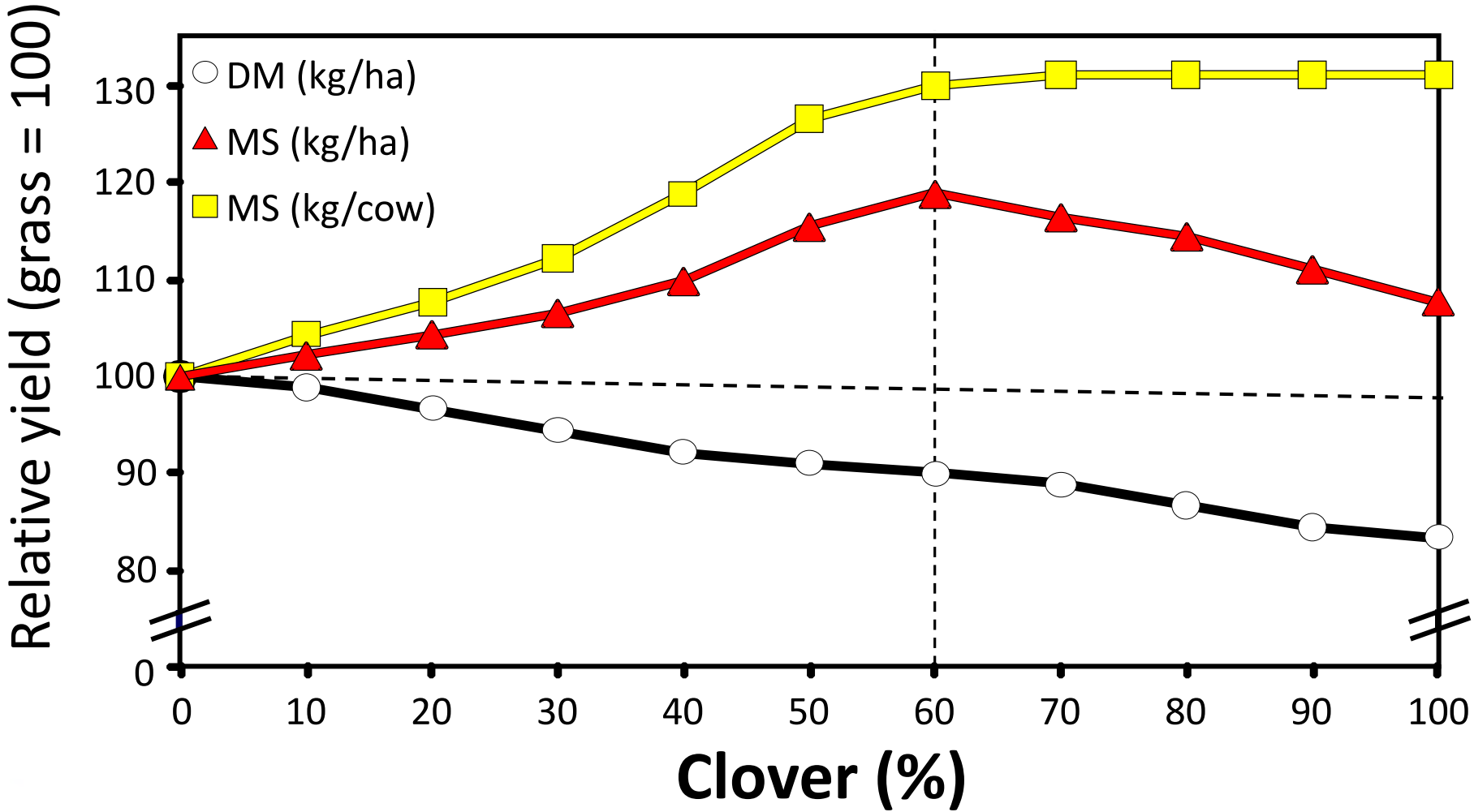




Photo: Jo Grigg
Tempello

Sheep prefer 70% legume, 30% grass

Russell lupin grazing trial at Sawdon Station



High aluminium soils

Black et al. 2014

Conclusions

- Light interception drives dry matter production
- Temperature (air and soil) affect crop development
- NTW water affect leaf area expansion and Ps.
- Spring gives highest WUE
- Agronomists role is to balance nitrogen and water
- WHICH LEGUME? – When to use urea?
- Optimize production with minimal footprint

References

- Black, A. D., Loxton, G., Ryan-Salter, T. P. and Moot, D. J. 2014. Sheep performance on perennial lupins over three years at Sawdon Station, Lake Tekapo. *Proceedings of the New Zealand Grassland Association*, **76**, 35-39.
- Brown, G., Naish, T. (not specified). The late Quaternary sequence architecture of Canterbury Blight and adjacent plains - <http://www.gns.cri.nz/>. (Presentation)
- Cosgrove G. 2005. Novel grazing management: making better use of white clover. Proceedings of the 2005 SIDE Conference. Department of Statistics. 2013. Agricultural Production Survey variables (various years). Accessed: (various dates). Online: <http://www.stats.govt.nz>
- Green, C. F. 1987. [Nitrogen nutrition and wheat growth in relation to absorbed solar radiation](#). *Agricultural and Forest Meteorology*, **41**, 207-248.
- Hay, R. J. M. and Porter, J. R. 2006. *The Physiology of Crop Yield* (2nd Ed). Oxford: Blackwell Publishing Ltd. 314 pp.
- Kearney, J. K., Moot, D. J. and Pollock, K. M. 2010. [Dryland lucerne production in Central Otago](#). *Proceedings of the New Zealand Grassland Association*, **72**, 121-126.
- Lucas, R. J., Smith, M. C., Jarvis, P., Mills, A. and Moot, D. J. 2010. Nitrogen fixation by subterranean and white clovers in dryland cocksfoot pastures. *Proceedings of the New Zealand Grassland Association*, **72**, 141-146.
- Martin, R. J., Thomas, S. M., Stevens, D. R., Zyskowski, R. F., Moot, D. J. and Fraser, T. J. 2006. Improving water use efficiency on irrigated dairy farms in Canterbury. *Proceedings of the New Zealand Grassland Association*, **68**, 155-160. Mills, A. 2007. Understanding constraints to cocksfoot (*Dactylis glomerata* L.) based pasture production, PhD thesis, Lincoln University, Canterbury. Online access: http://researcharchive.lincoln.ac.nz/dspace/bitstream/10182/32/1/mills_phd.pdf. 202 pp.
- Mills, A., Moot, D. J. and Jamieson, P. D. 2009. Quantifying the effect of nitrogen on productivity of cocksfoot (*Dactylis glomerata* L.) pastures. *European Journal of Agronomy*, **30**, 63-69.
- Mills, A., Moot, D. J. and McKenzie, B. A. 2006. Cocksfoot pasture production in relation to environmental variables. *Proceedings of the New Zealand Grassland Association*, **68**, 89-94.
- Moot, D. J., Brown, H. E., Pollock, K. and Mills, A. 2008. [Yield and water use of temperate pastures in summer dry environments](#). *Proceedings of the New Zealand Grassland Association*, **70**, 51-57.
- Moot, D. J., Mills, A. and Pollock, K. M. 2010. Natural resources for Canterbury agriculture. *Proceedings of the New Zealand Grassland Association*, **72**, IX-XVII.
- NIWA 2013. Climate Explorer – National Median Annual Rainfall Map. Accessed: 1/10/2010. <http://climate-explorer.niwa.co.nz>.
- Peri, P. L., Moot, D. J., McNeil, D. L., Varella, A. C. and Lucas, R. J. 2002. [Modelling net photosynthetic rate of field-grown cocksfoot leaves under different nitrogen, water and temperature regimes](#). *Grass and Forage Science*, **57**, 61-71.
- Wilson, D. R. 1987. New approaches to understanding the growth and yield of pea crops. Peas: Management for quality. *Special Publication No. 6, Agronomy Society of New Zealand*, 23-28.

Acknowledgements for data/graphs

- Environment Canterbury (ECAN) for Harts Creek data (data ©ECAN)
- New Zealand Fertiliser Association for the nitrogen fertiliser data

Websites/Social Media presence

Lincoln University Dryland Pastures Website:

<http://www.lincoln.ac.nz/dryland>

Lincoln University Dryland Pastures Blog:

<https://blogs.lincoln.ac.nz/dryland/>

YouTube: <https://www.youtube.com/DrylandPastures>

Facebook: <https://www.facebook.com/DrylandPasturesResearch>